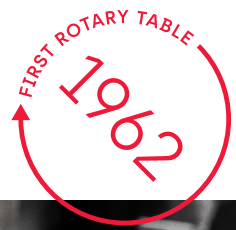




ZEATZ

Fitting your projects



Custom design
and development
on rotary tables

CAS DEU ITA ENG





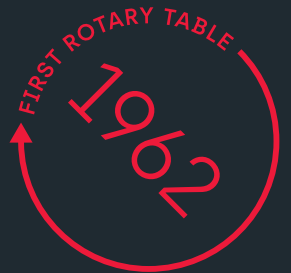


ZEATZ

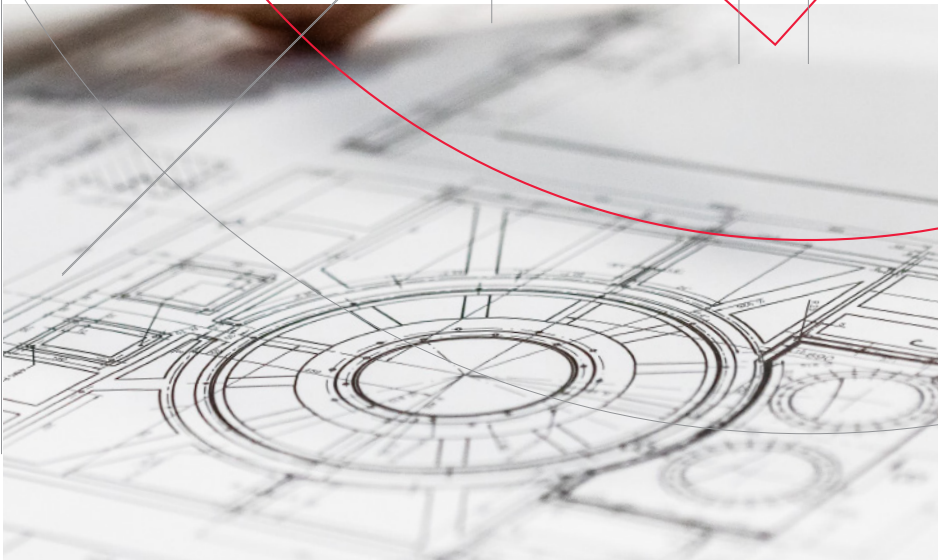
Specialising
in bespoke designs
for rotary tables.

In 1962 Zeatz was the first company to specialise in the manufacture of rotary tables at a national level. Thanks to 60 years of experience serving the machine tool sector, it provides flexible solutions and customised design.

Zeatz Innovation, its own engineering department, develops innovative technical solutions from the smallest rotary table to the biggest.



Fitting your projects



Fitting your project is our philosophy.

This is a statement of intent of how Zeatz faces each project.

Find the best solution for manufacturers
of mechanised centres, milling, boring, etc.



FLEXIBILITY.

This is Zeatz's greatest value. It offers flexible solutions for each project according to the customer's needs. From the smallest rotary table to the largest one. Flexibility in all projects.



CUSTOMISATION.

100% personalisation of our projects maintaining direct and close contact with the customer.



SOLVENCY.

Zeatz's solutions quality is recognised by its high precision and rigidity tested on every project.



EXPERTISE.

Zeatz makes the difference due to its capacity and experience in special projects and big plates.

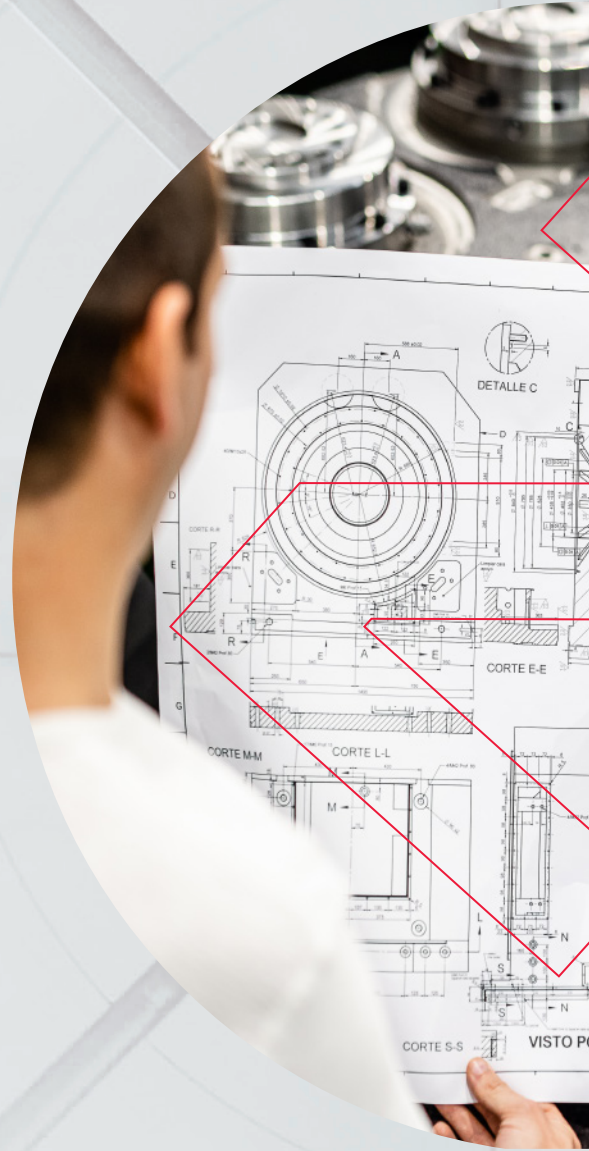
ZEATZ

ZEATZ INNOVATION. Engineering and assistance.

Zeatz Innovation is essential to fulfil the philosophy of Fitting your project. It is made up of our own technical department of engineers and mechanics. Its mission is to investigate, develop and provide valuable technical solutions to the clients, with the latest generation machinery and instruments and the knowledge for the innovative use of technology.

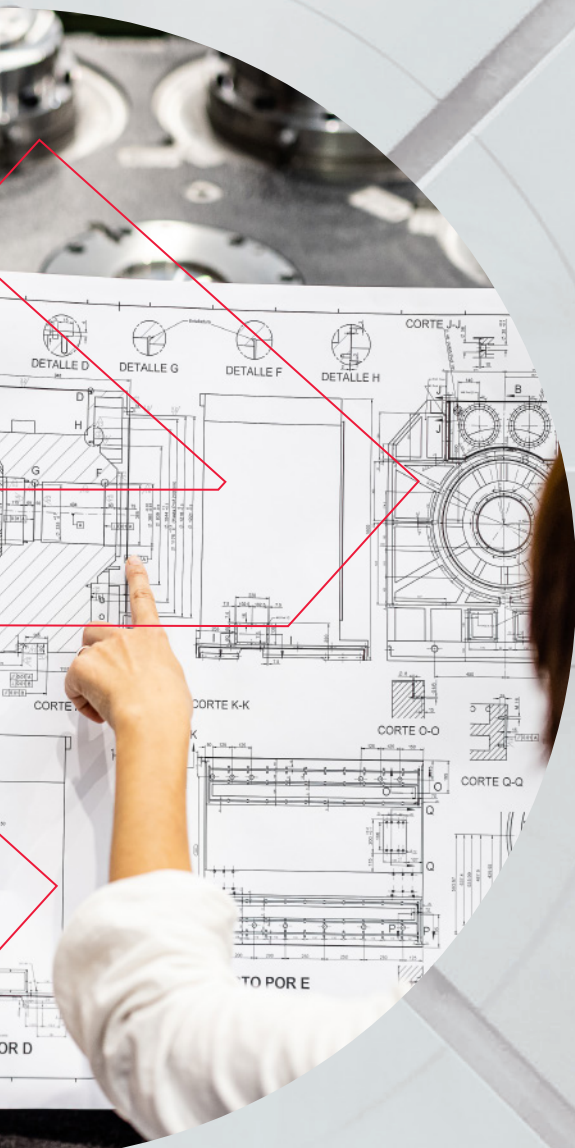
**International post-sales service.
Our own network of distributors.**

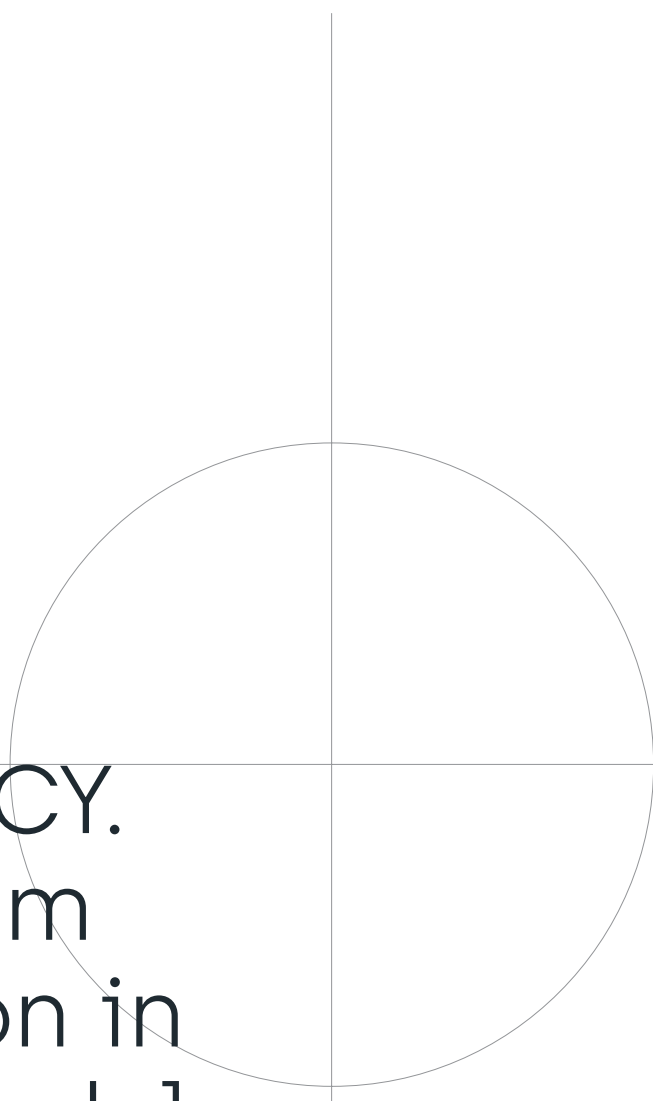
Zeatz also has a technical assistance team for the application maintenance both at the customer's home and at the company's premises. This team can carry out the electronic and mechanical installation of the rotary table on your machine. Zeatz uses original spare parts for this service.



ZEATZ RETROFITTING

Zeatz not only manufactures, but also offers **technical assistance, reconversion, repair and maintenance service** of rotary tables made by different brands.





SOLVENCY. Maximum precision in each model.

The renowned quality and precision of Zeatz rotary tables is demonstrated and proven in every project. The manufactured articles go through the quality control department to make all the **technical and geometrical** verifications by our own engineering and mechanical department.

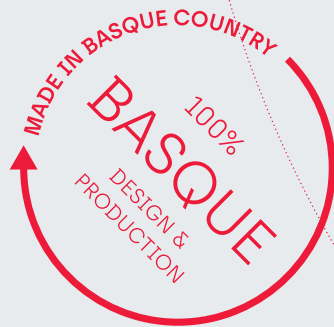
Angular checks are carried out in Zeatz's quality control department by means of a **Renishaw Interferometric Laser System** with which we measure angularity, positioning, straightness, and more. This check can also be carried out at the customer's premises.

These detailed verifications guarantee compliance with UNE 15300-2 standards, UNE 15450-2 and VDI/DGQ 3441.

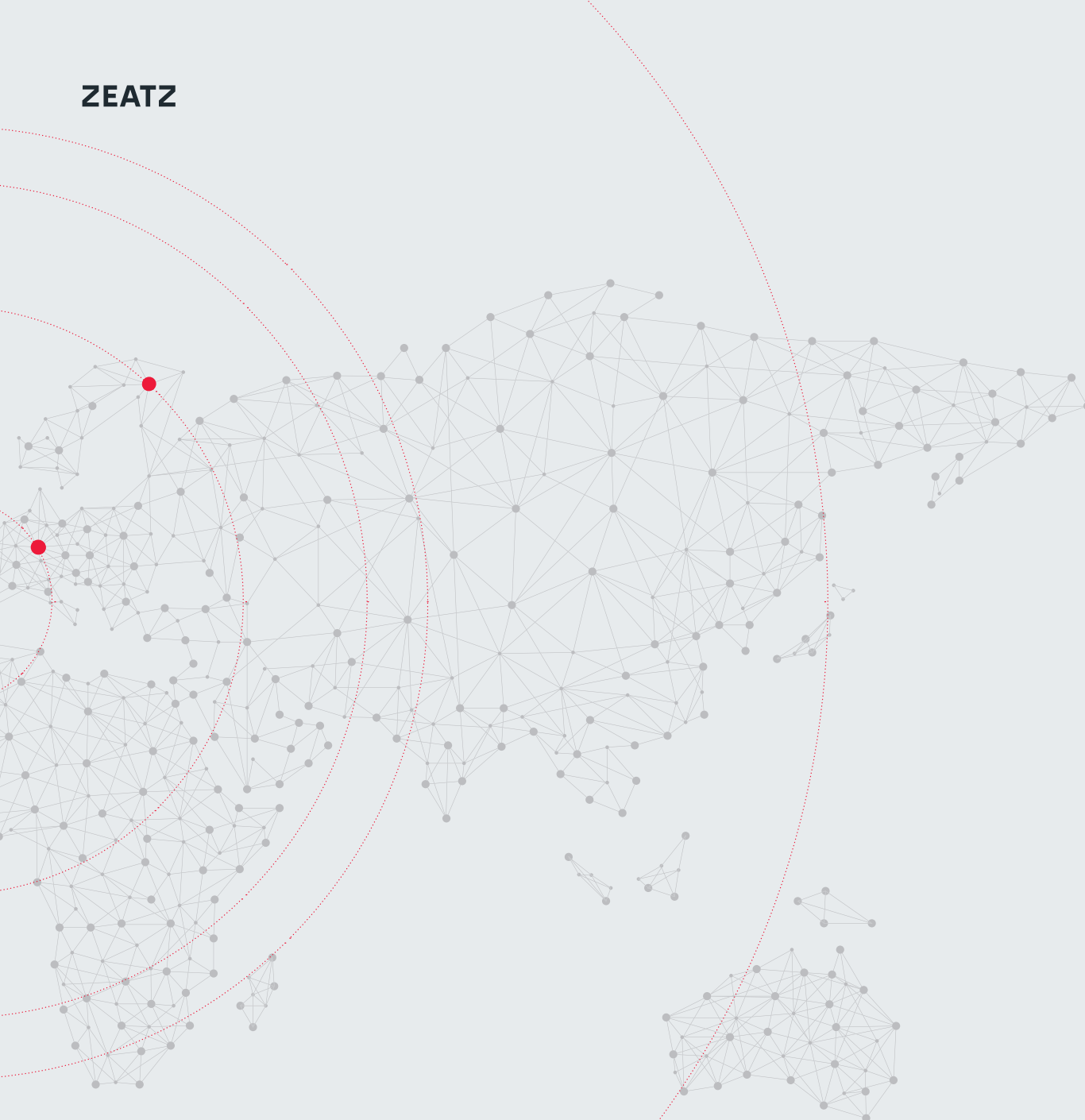
Zeatz also has ISO-9001 quality management system and ISO-14001 certification from the company Aquacert, which guarantees a high-level of quality in all procedures.



ZEATZ



GLOBAL
PRESENCE.
Design and manufacture
in the Basque Country.



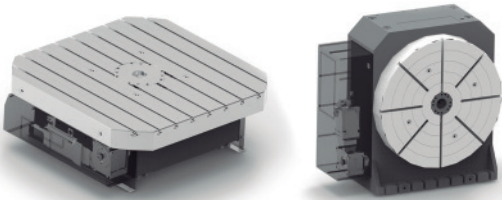
Zeatz products are designed and manufactured in the Basque Country. An industrial environment recognised by the world machine tool sector in the research and manufacture of tailored solutions. Its **engineering, design, production and quality control** departments are grouped together in its 2000m² premises.

Zeatz has exclusive distributors in the United States, South America, Asia and Africa. In European countries, it provides a service from its central office as well as with local agents for a technical service close to the customer.

Logistics. Strategic location of the premises for the national and European market. Worldwide logistics solutions.

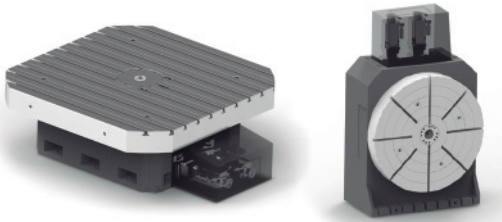
MAXIMUM PRECISION IN EACH MODEL.

PH-PHV Dual Lead



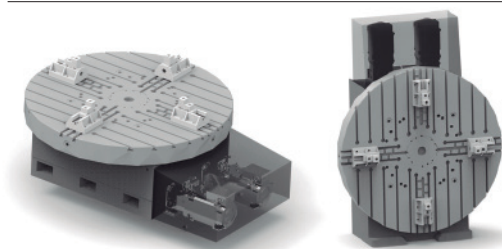
- **Turning system:** "Worm drive" - "Dual lead".
- **Operating position:** horizontal and vertical.
- **Field of application:** Milling and Drilling.
- **Functions:** Positioning, Continuous rotation and Interpolation.
- **Allowed work piece weight:** 20,000 kg.

PH-PHV Twin Drive



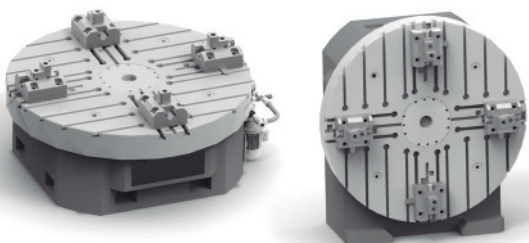
- **Turning system:** "Pinion Gear" - "Twin drive".
- **Operating position:** horizontal and vertical.
- **Field of application:** Milling and Drilling.
- **Functions:** Positioning, Continuous rotation and Interpolation.
- **Maximum standard work piece weight:** 60,000 kg.

PHT- PHVT Turning



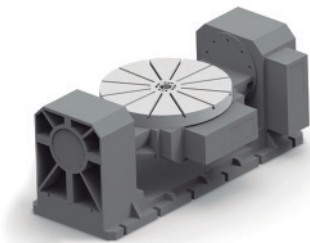
- **Turning system:** "Sprocket chain" - "Twin drive"
2 speed range reducer..
- **Field of application:** Turning, Grinding, Milling, Drilling.
- **Functions:** Fast turning, Highly precise positioning and Interpolation.
- **Maximum standard work piece weight:** 50,000 kg.

MDH-MDHV Turning



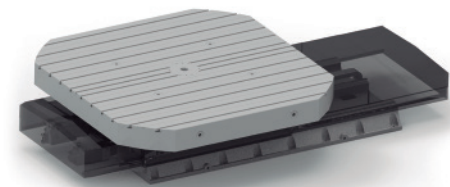
- **Turning system:** Direct motor.
- **Field of application:** Turning, Grinding, Milling, Drilling.
- **Functions:** Fast turning, Highly precise positioning and Interpolation.
- **Allowed work piece weight:** Up to 30,000 kg.

PT Tilting



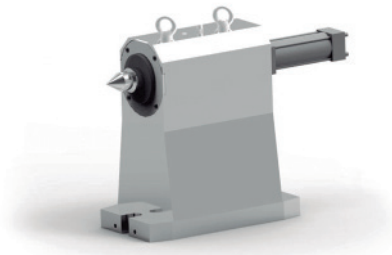
- **Turning system:** "Dual lead".
- **Operating position:** Tilting table.
- **Field of application:** Milling and Drilling.
- **Functions:** High-precision positioning and Interpolation.
- **Allowed work piece weight:** Up to 20,000 kg.

Linear **OPTION**



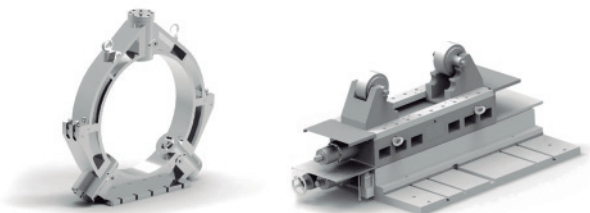
- **Option available for:** PH, PHT, MDH, PT.
- **Operating position:** horizontal.
- **Field of application:** Milling and Drilling.
- **Functions:** fast rotation, high-precision positioning and interpolation.
- **Maximum standard work piece weight:** 60,000 kg.

Tailstock



- Dead or rotary quill.
- Adapted to Morse Taper.
- Manual or automatic movement option.
- Standard or special quill displacement.

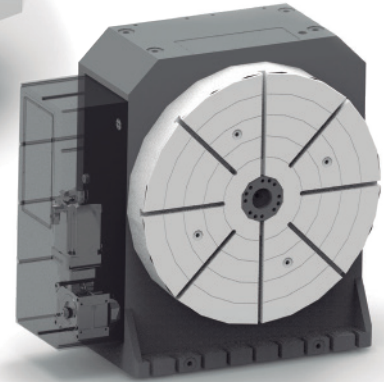
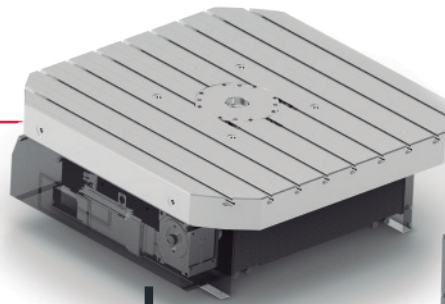
Steady rest



- Different models of steady rests according to use.
- Adapted to the dimensions of the piece.

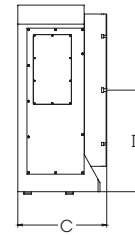
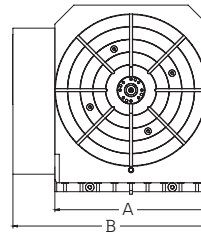
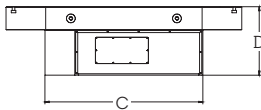
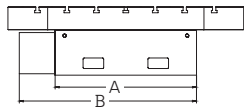
PH-PHV

Dual Lead



- Clamping system with automatic hydraulic lock.
- Working position: Horizontal and Vertical.
- Configurable according to customer's needs.
- Possibility of table plate, levelling or adapted to the customer's bench.
- Possibility of adaptation to different encoder models.
- Possibility to have a through hole.

Measurements:

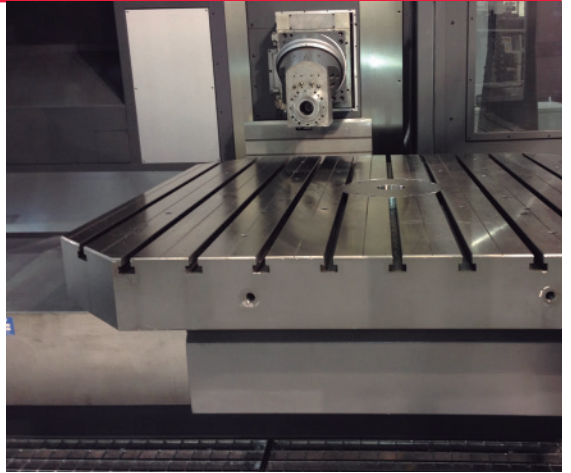
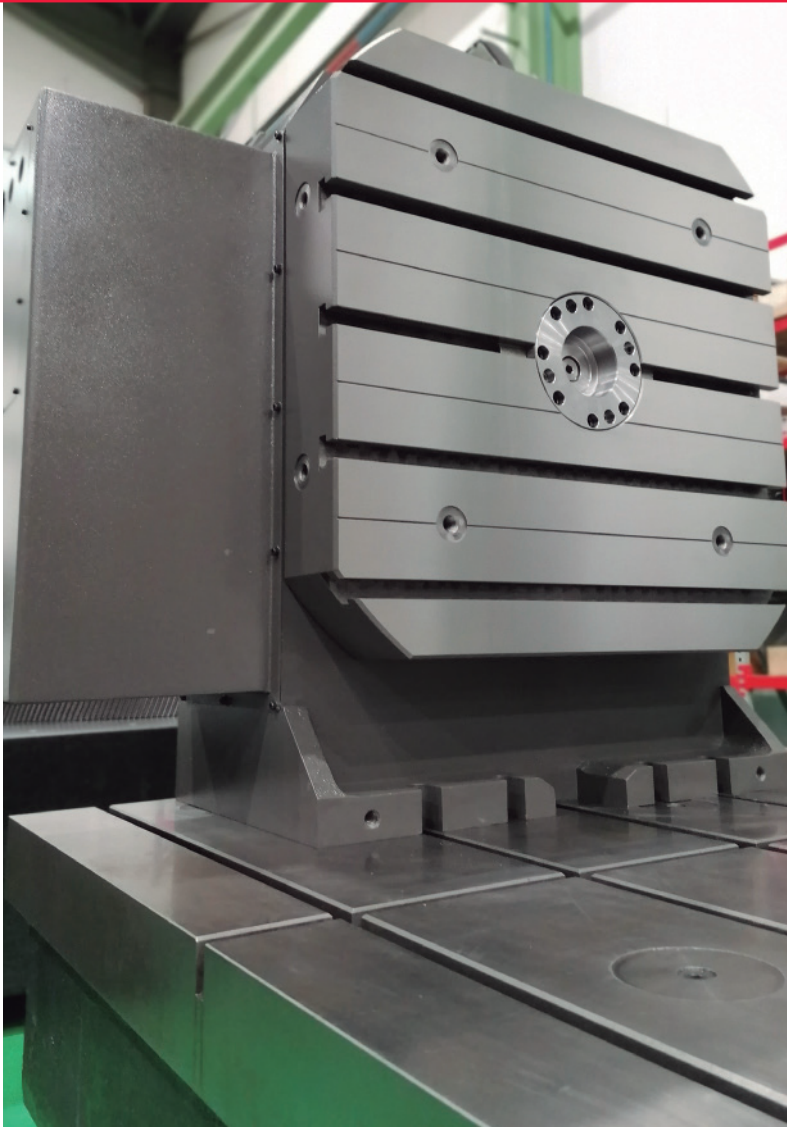


PH	320	450	600	800	1000	1200
A	370	510	600	800	1000	1200
B	570	730	850	1060	1300	1530
C	410	550	670	825	1100	1340
D	270	325	400	500	470	585

PHV	320	450	600	800	1000	1200
A	370	510	600	800	1000	1200
B	570	730	850	1060	1300	1530
C	270	325	400	500	500	700
D	250	325	450	500	650	800

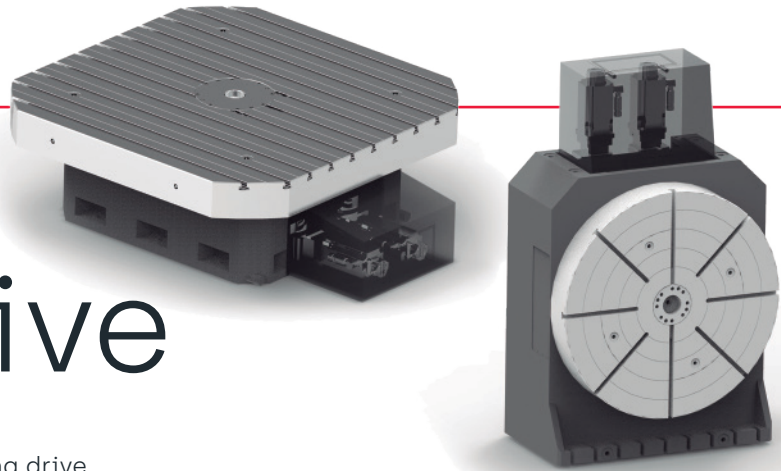
Characteristics:

	320	450
Table dimension (mm)	Ø320 / Ø450 320x320 / 450x450	Ø450 / Ø500 450x450 / 500x500
Load capacity [horizontal] [T]	0.8	1.5
Load capacity [vertical] [T]	0.25	0.8
Bearing diameter [mm]	Ø160 - Ø200	Ø250 - Ø330
Turning system	Dual Lead	Dual Lead
Rotating speed [rpm]	7	7
Torque limit during rotary milling [Nm]	1600	3000
Clamping Torque [Nm]	2000	4000
Inertia [kgm ²]	400	800
Max. through hole option [Mm]	Ø120	Ø200



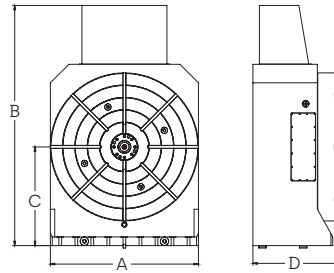
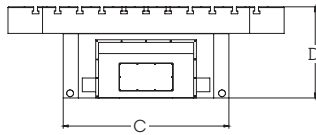
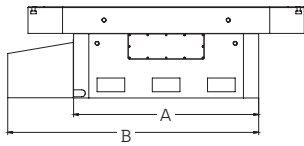
600	800	1000	1200
Ø600 / Ø800 600x600 / 800x800	Ø800 / Ø1000 800x800 / 1000x1000	Ø1000 / Ø1200 1000x1000 / 1200x1200	Ø1200 / Ø1500 1200x1200 / 1500x1500
3	6	10	20
1.5	2.5	3	4
Ø320 - Ø400	Ø440 - Ø540	Ø550 - Ø670	Ø770 - Ø900
Dual Lead	Dual Lead	Dual Lead	Dual Lead
4.9	4.9	4.9	3.6
6000	10000	14000	18000
5000	10000	25000	50000
3000	8000	15000	20000
Ø270	Ø380	Ø480	Ø600

PH-PHV Twin Drive



- "TWIN DRIVE" double pinion gear rotating drive.
- Automatic hydraulic clamping system.
- Working position: Horizontal and Vertical.
- Configurable according to customer's needs.
- Possibility of table plate, levelling or adapted to the customer's bench.
- Possibility of adaptation to different encoder models.
- Possibility to have a through hole.

Measurements:



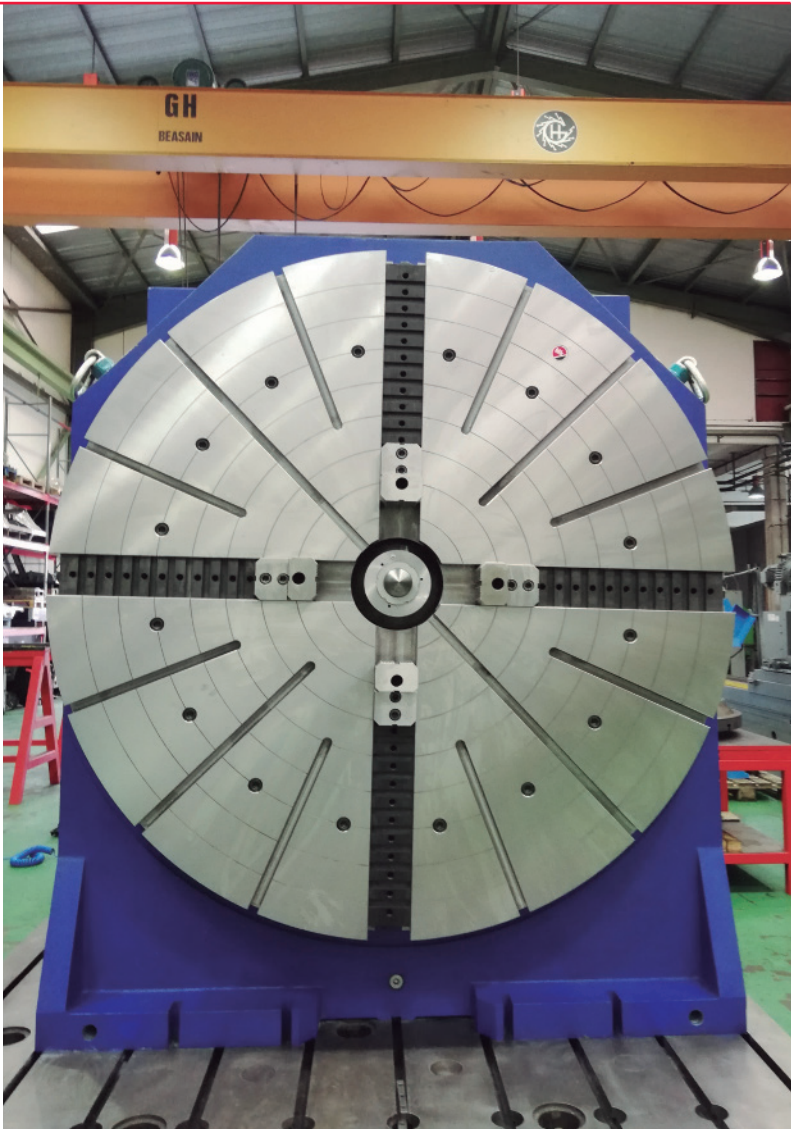
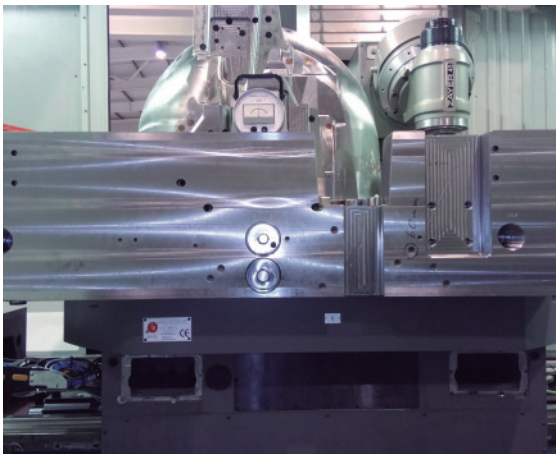
PH	1000	1200	1500	1800	2000	2500
A	1200	1200	1500	1800	2020	2160
B	1600	1675	2000	2275	2525	2550
C	1200	1200	1500	1800	2020	2160
D	575	660	675	675	775	800

PHV	1000	1200	1500	1800	2000	2500
A	1200	1200	1500	1800	2020	2160
B	1650	1875	2400	2575	2815	3115
C	650	800	1150	1200	1300	1400
D	575	660	675	675	775	800

Characteristics:

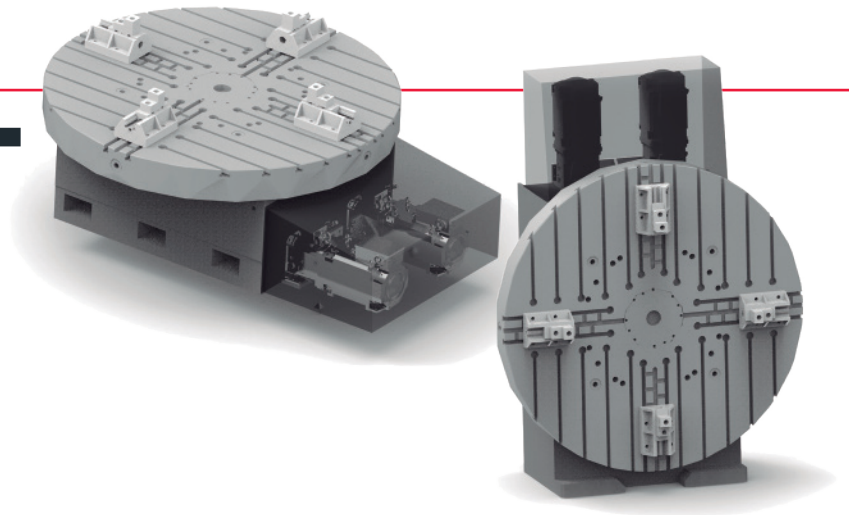
	1000	1200
Table dimension (mm)	Ø1000 / Ø1200 1000x1000 / 1200x1200	Ø1200 / Ø1500 1200x1200 / 1500x1500
Load capacity [horizontal] [T]	10	20
Load capacity [vertical] [T] [Standard]	3	4
Bearing diameter [mm]	Ø600 - Ø720	Ø770 - Ø900
Turning system	Twin drive	Twin drive
Rotating speed [rpm]	5	3,6
Torque limit during rotary milling [Nm]	14000	18000
Clamping Torque [Nm]	25000	50000
Inertia [kgm ²]	10000	15000
Max. through hole option [Mm]	Ø480	Ø600

[!] General data subject to change according to configuration.



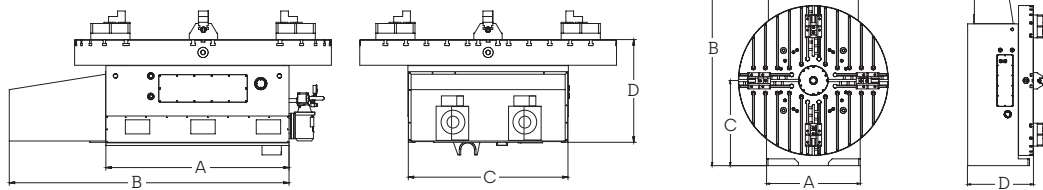
1500	1800	2000	2500
Ø1500 / Ø1800 1500x1500 / 1800x1800	Ø1800 / Ø2000 1800x1800 / 2000x2000	Ø2000 / Ø2500 2000x2000 / 2500x2500	Ø2500 / Ø3000 2500x2500 / 3000x3000
30	40	50	60
6	8	10	15
Ø930 - Ø1130	Ø1100 - Ø1400	Ø1270 - Ø1530	Ø1500 - Ø1800
Twin drive	Twin drive	Twin drive	Twin drive
3.6	2.5	2.2	2
30000	40000	50000	60000
58000	70000	87000	110000
30000	80000	130000	180000

PHT-PHVT Turning



- Turning and milling uses.
- 2 speed gearboxes.
- "TWIN DRIVE" rotating drive.
- Automatic hydraulic clamping system.
- Working position: Horizontal or Vertical.
- Configurable according to customer's needs.
- Possibility of adaptation to different encoder models.

Measurements:



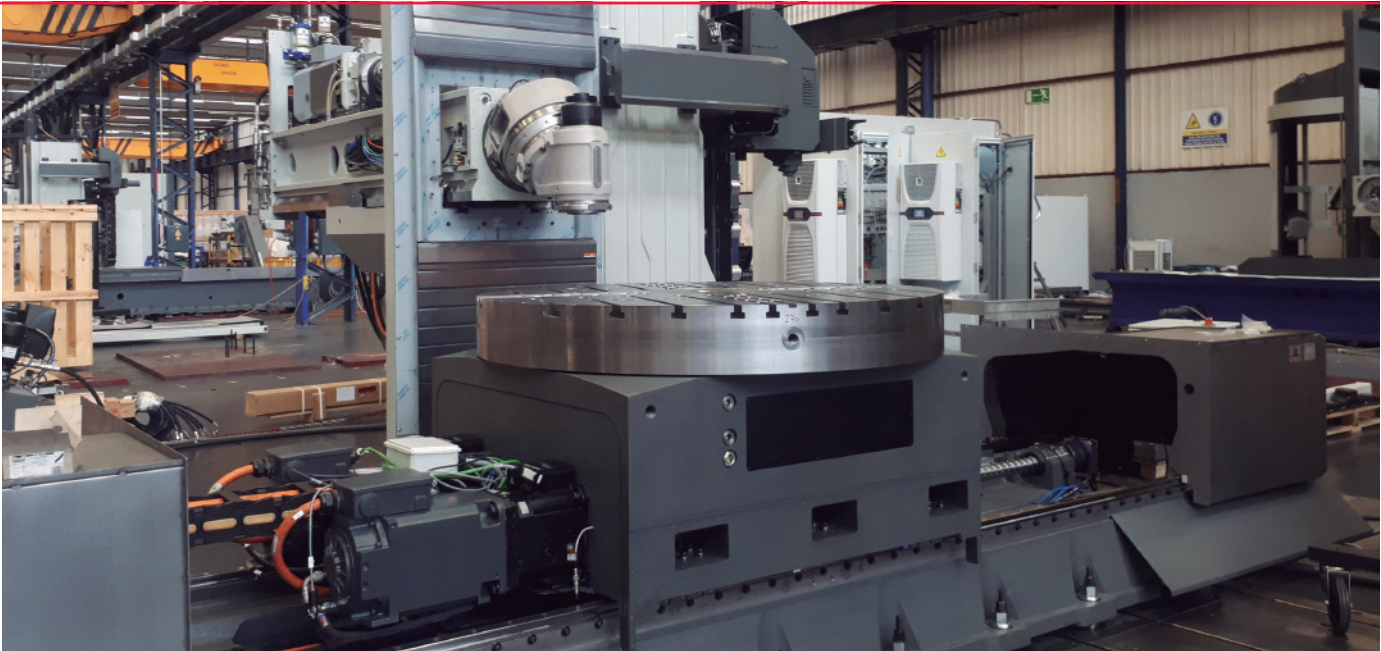
PHT	1000	1200	1500	1800	2000
A	1230	1430	1670	1990	2210
B	1980	2180	2420	2750	2960
C	1050	1250	1500	1800	2000
D	740	800	825	850	900

PHVT	1000	1200	1500	1800	2000
A	1050	1250	1500	1800	2000
B	2200	2480	2720	3050	3260
C	900	1000	1130	1300	1400
D	900	1000	1100	1200	1300

Characteristics:

	1000	1200
Table dimension [mm]	Ø1200	Ø1500
Load capacity [Milling] [T] (H/V)	10/3	20/4
Load capacity [Turning] [T] (H/V)	5/2	10/3
Bearing diameter [mm]	Ø470 - Ø725	Ø660 - Ø920
Turning system	Twin drive	Twin drive
Max. torque [Turning] i:1 [Nm]	1700	1700
Max. torque [Milling] i:5.5 [Nm]	12000	15000
Turning speed [Turning] [rpm]	220	220
Turning speed [Milling] [rpm]	30	30
Clamping torque [Nm]	25000	50000

[!] General data subject to change according to configuration.

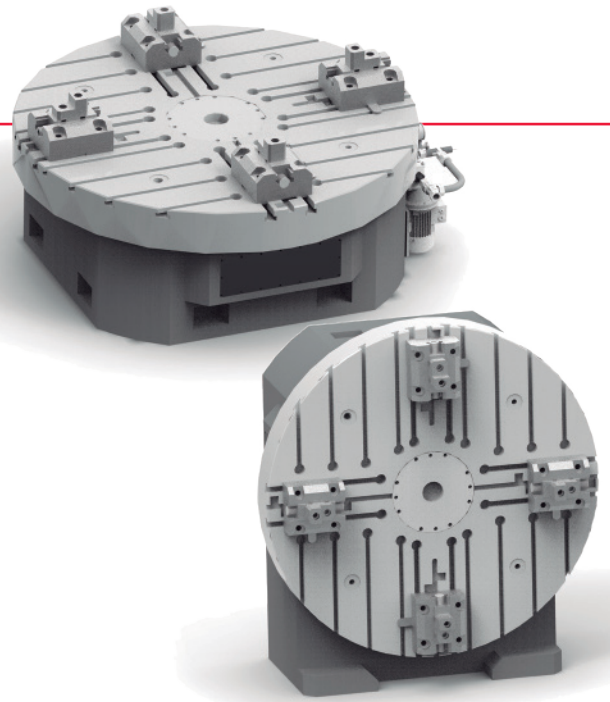


1500	1800	2000
Ø1800	Ø2000	Ø2500
35/8	40/10	50/12
18/5	25/6	30/8
Ø905 - Ø1160	Ø1220 - Ø1480	Ø1450 - Ø1650
Twin drive	Twin drive	Twin drive
3500	5300	8900
30000	48000	81000
180	120	100
20	13	11
58000	70000	87000

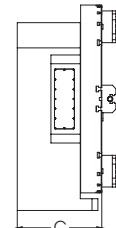
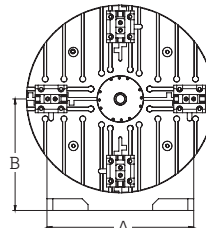
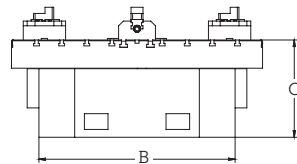
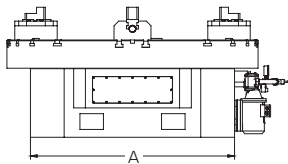
MDH-MDHV

Turning

- Turning and milling uses.
- Direct drive motor.
- Automatic hydraulic clamping system.
- Working position: Horizontal or Vertical.
- Configurable according to customer's needs.
- Possibility of adaptation to different encoder models.



Measurements:



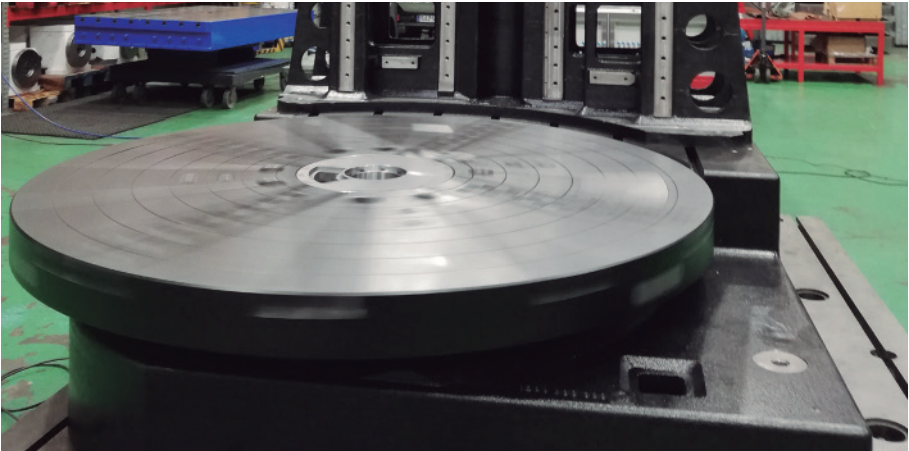
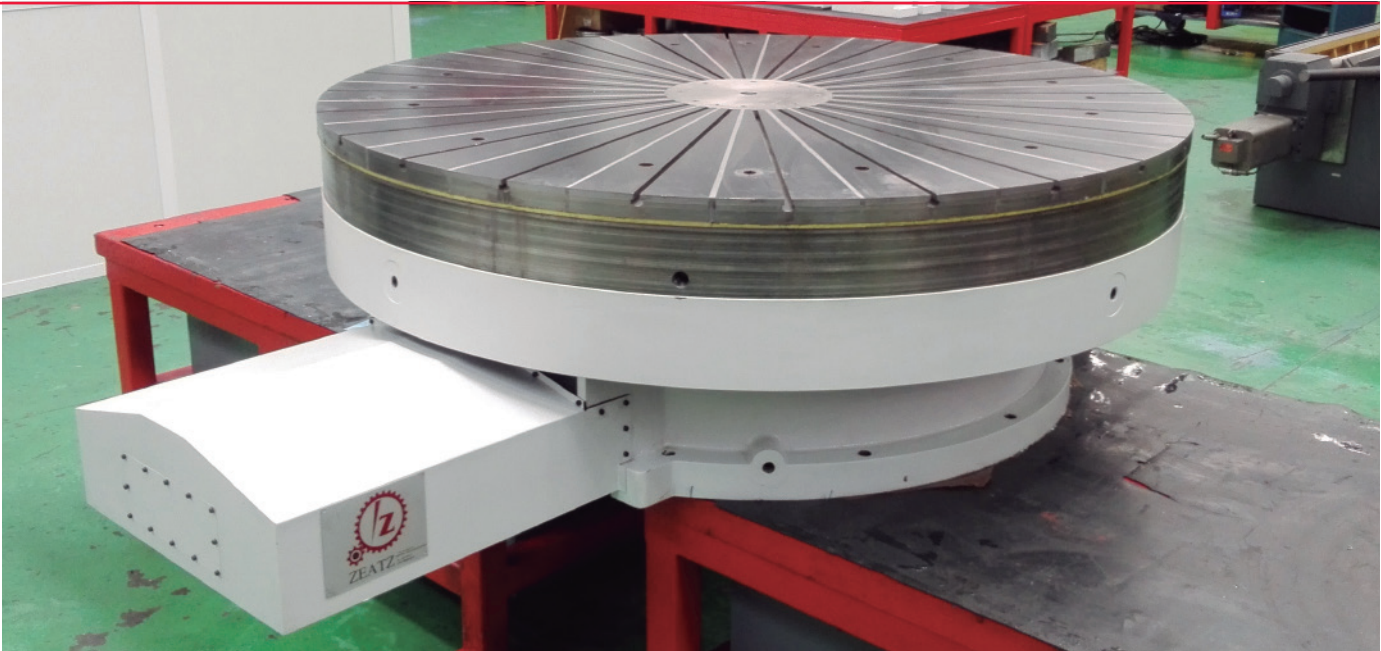
MDH	800	1000	1200	1500
A	1000	1050	1150	1300
B	800	1050	1150	1300
C	500	500	570	625

MDHV	800	1000	1200	1500
A	800	1050	1150	1300
B	600	800	875	950
C	500	650	720	775

Characteristics:

	800	1000
Table dimension [mm]	Ø800 - Ø1000	Ø1000 - Ø1200
Load capacity [Milling] [T] (H/V)	6/2	10/3
Load capacity [Turning] [T] (H/V)	4/1	6/2
Bearing diameter [mm]	Ø600	Ø750
Turning system	Direct drive	Direct drive
Approved torque [Turning] [S1] [Nm]	2050	4130
Approved torque [Milling] [S6] [Nm]	3460	6920
Maximum speed [Turning] [rpm]	350	300
Maximum speed [Milling] [rpm]	100	80
Braking torque [Nm]	5000	10000

[!] General data subject to change according to configuration.



1200

Ø1200 - Ø1500

15/4

10/3

Ø870

Direct drive

8920

11600

250

70

20000

1500

Ø1500 - Ø2200

20/6

12/4

Ø1095

Direct drive

11900

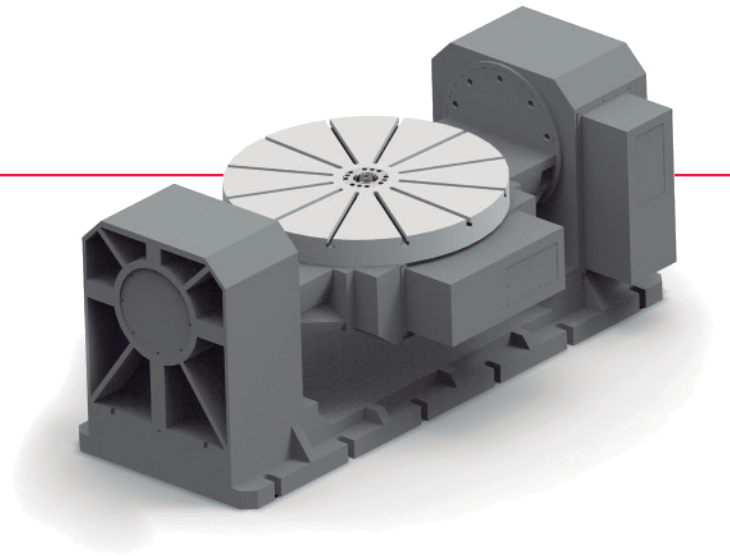
15500

200

60

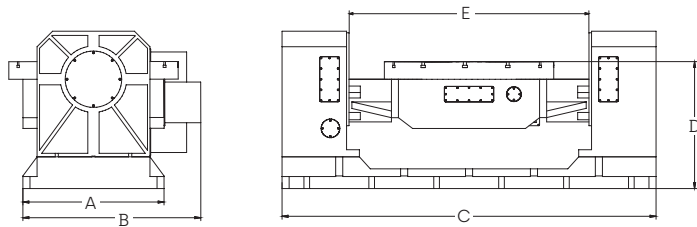
25000

PT Tilting



- "DUAL LEAD" endless-crown rotating drive.
- Automatic hydraulic clamping system.
- Configurable according to customer's needs.
- Possibility of adaptation to different encoder models.

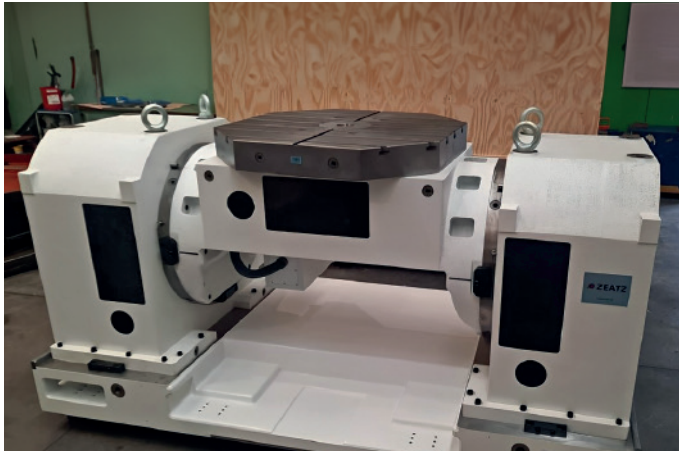
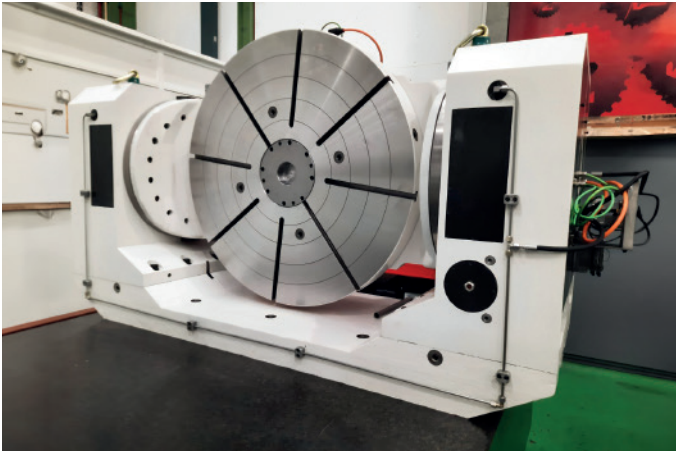
Measurements:



PHT	450	600	800	1000
A	370	510	600	800
B	570	730	850	1060
C	1100	1350	1700	2100
D	660	730	775	875
E	700	900	1100	1600

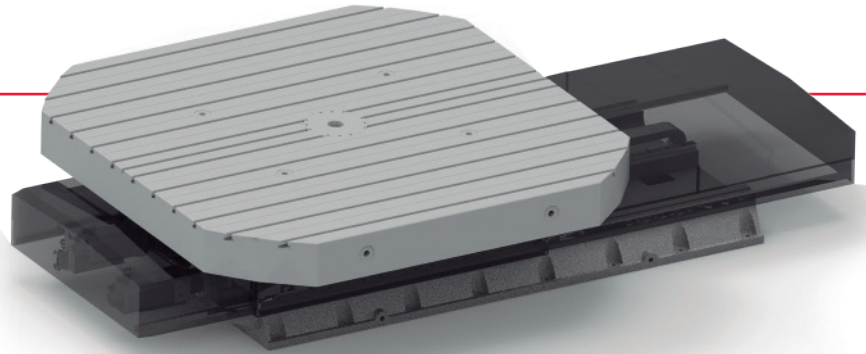
Characteristics:

	450		600	
	Rotation axis	Tilting axis	Rotation axis	Tilting axis
Table dimension [mm]	Ø600		Ø800	
Load capacity [Kg]	500		750	
Bearing diameter [mm]	Ø250 - Ø330	Ø160 - Ø200	Ø320 - Ø400	Ø250 - Ø330
Turning system	Dual Lead	Dual Lead	Dual Lead	Dual Lead
Rotating speed [rpm]	7	3.6	4.9	3.6
Torque limit during rotary milling [Nm]	3000	1600	6000	3000
Clamping torque [Nm]	4000	4000	5000	8000
Workpiece turning diameter [mm]	Ø700		Ø900	
Tilting angle	360°	90° - 30°	360°	90° - 30°



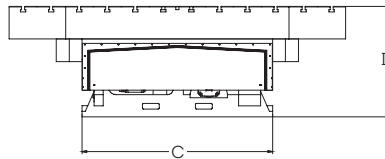
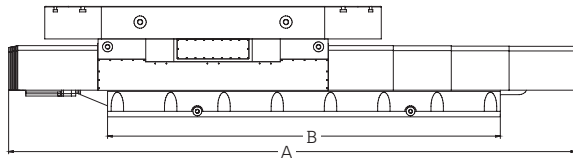
800		1000	
Rotation axis	Tilting axis	Rotation axis	Tilting axis
Ø1000		Ø1200	
1600		3000	
Ø440 - Ø540	Ø320 - Ø400	Ø550 - Ø670	Ø440 - Ø540
Dual Lead	Dual Lead	Dual Lead	Dual Lead
4.9	3.6	4.9	3.6
10000	6000	14000	10000
10000	10000	25000	20000
Ø1100		Ø1600	
360°	90° - 30°	360°	90° - 30°

Linear OPTION



- Linear option available for the following models:
 - PH
 - PHT
 - MDH
 - PT
- Maintenance-free linear sliders [5 years/20000km].
- Linear drive with ball screw or rack and sprocket chain depending on the length of the run.
- Working position: Horizontal.
- Configurable according to customer's needs.

Measurements:

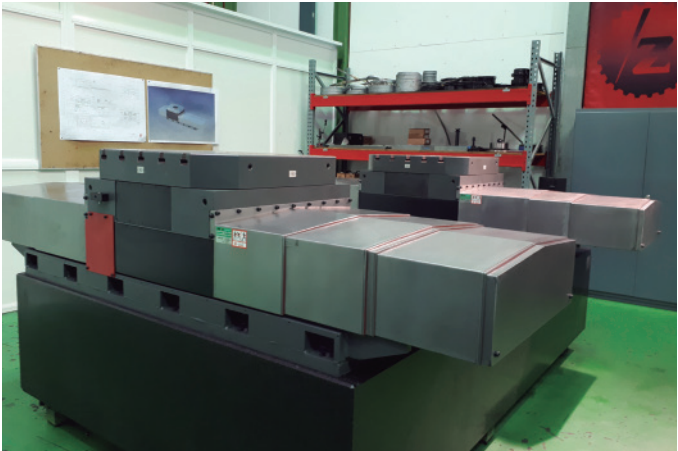
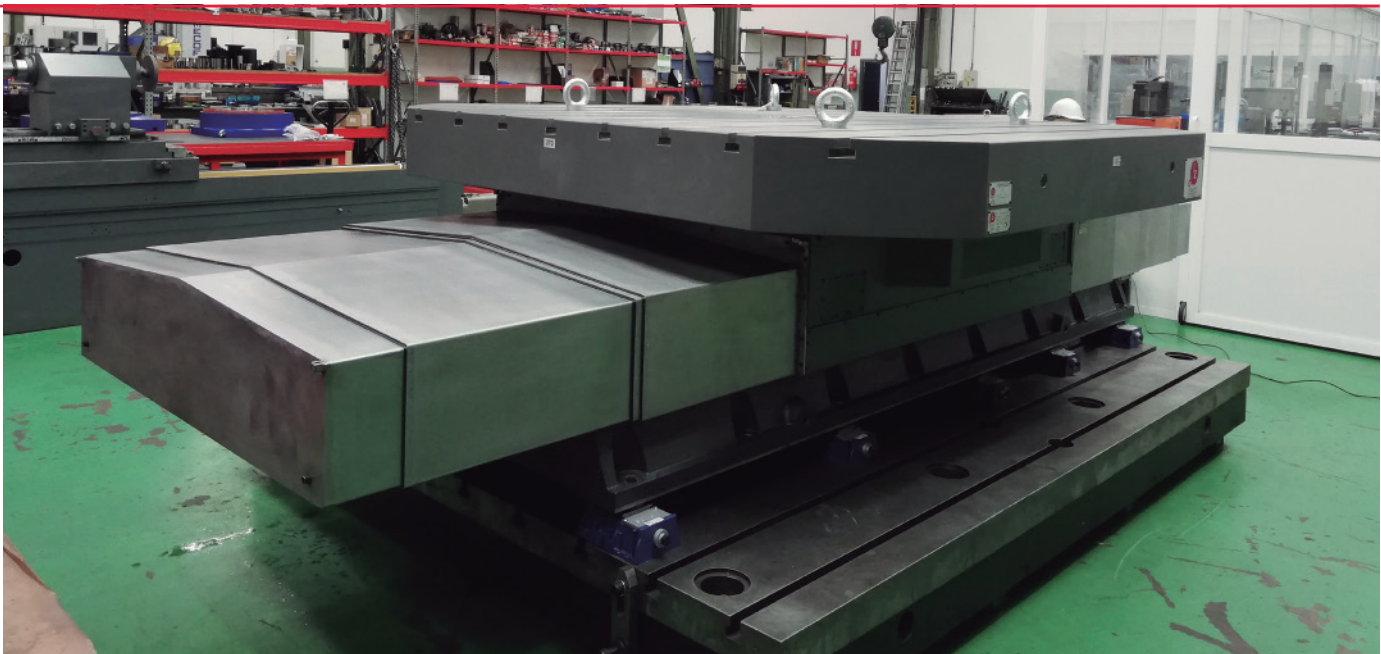


*Dimension "A and B"
corresponding to
the 1500mm run.

LINEAL	800	1000	1200	1500	1800	2000	2500
A	3350	3975	4275	4450	4675	4875	5050
B	2400	3000	3150	3325	3500	3700	4000
C	800	1000	1000	1200	1500	1800	2200
D	600	675	790	810	850	900	985

Characteristics:

	800	1000	1200
Load capacity [horizontal] [T]	6	10	20
Linear movement [mm]	1000 - 3000	1000 - 3000	1000 - 3000
Linear speed [m/min]	15	15	15
Thrust force [N]	11500	16000	23500
Number of linear guides	2	2	2

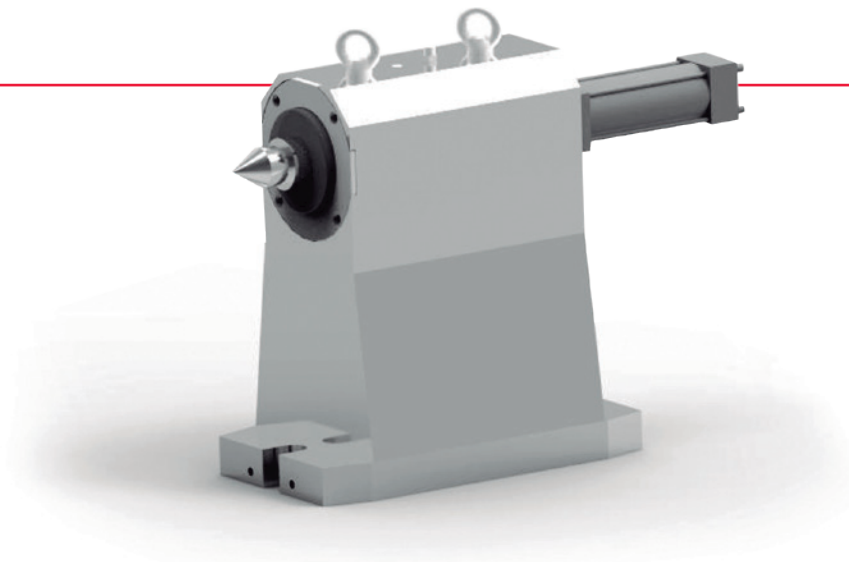


1500	1800	2000	2500
35	40	50	60
1000 - 3000	1000 - 3000	1000 - 3000	1000 - 3000
12	12	12	12
42000	42000	53000	53000
2	2	3	3

Tailstock

Different configuration options:

- Fixed or turning quill.
- Manual or automatic quill displacement.
- Thrust force display.



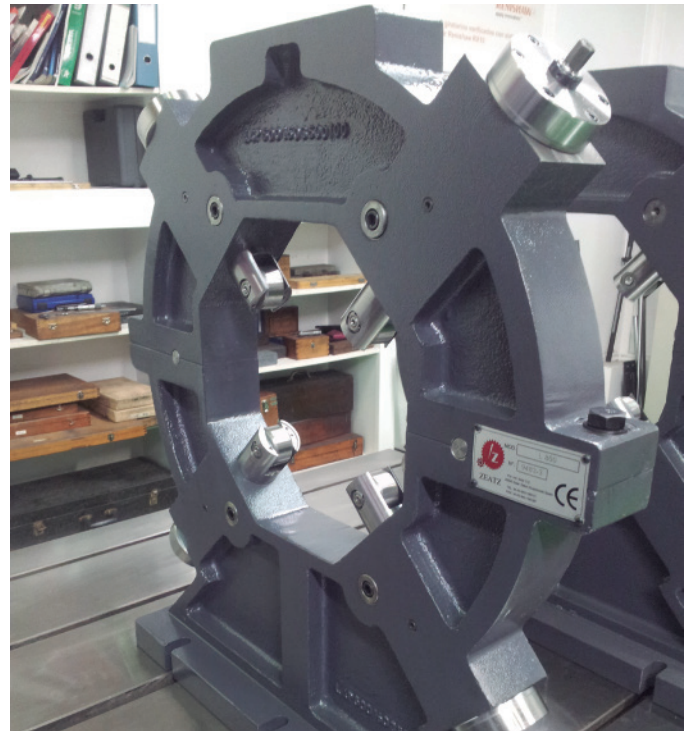
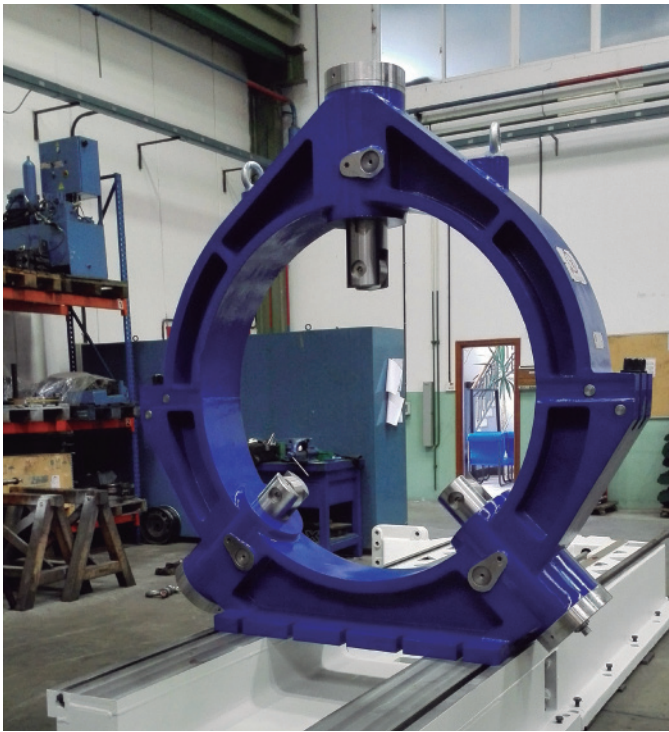
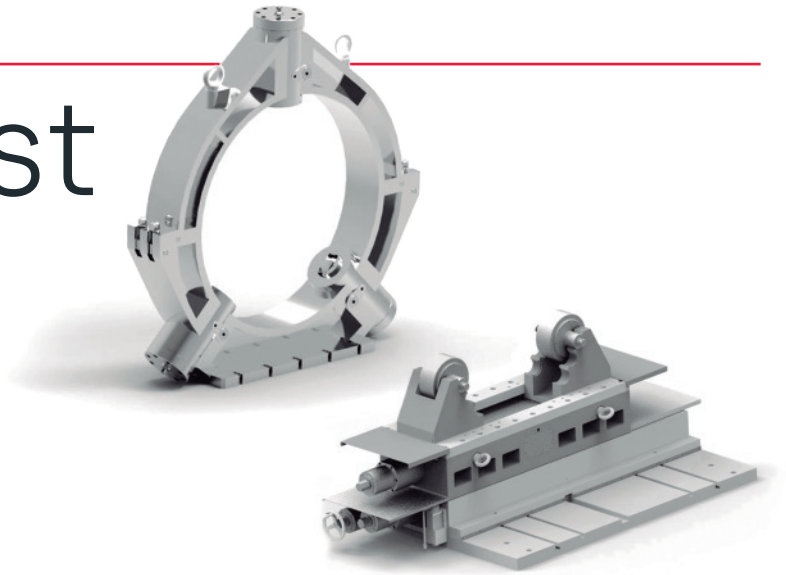
Characteristics:

	320	450	600	800	1000	1200	1500
Load capacity [kg]	400	800	1500	2500	3000	3500	5000
Tailstock quill [mm]	Ø80	Ø80	Ø100	Ø120	Ø140	Ø160	Ø180
Morse taper	4	4	5	5	6	6	6
Quill stroke [mm]	75	75	100	175	200	200	250
Height to the center [mm]	250	325	450	500	650	800	1150

Steady rest

Different configuration options:

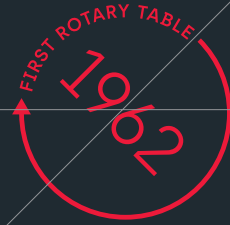
- 2, 3 or 4 points.
- Manual or automatic..



Characteristics:

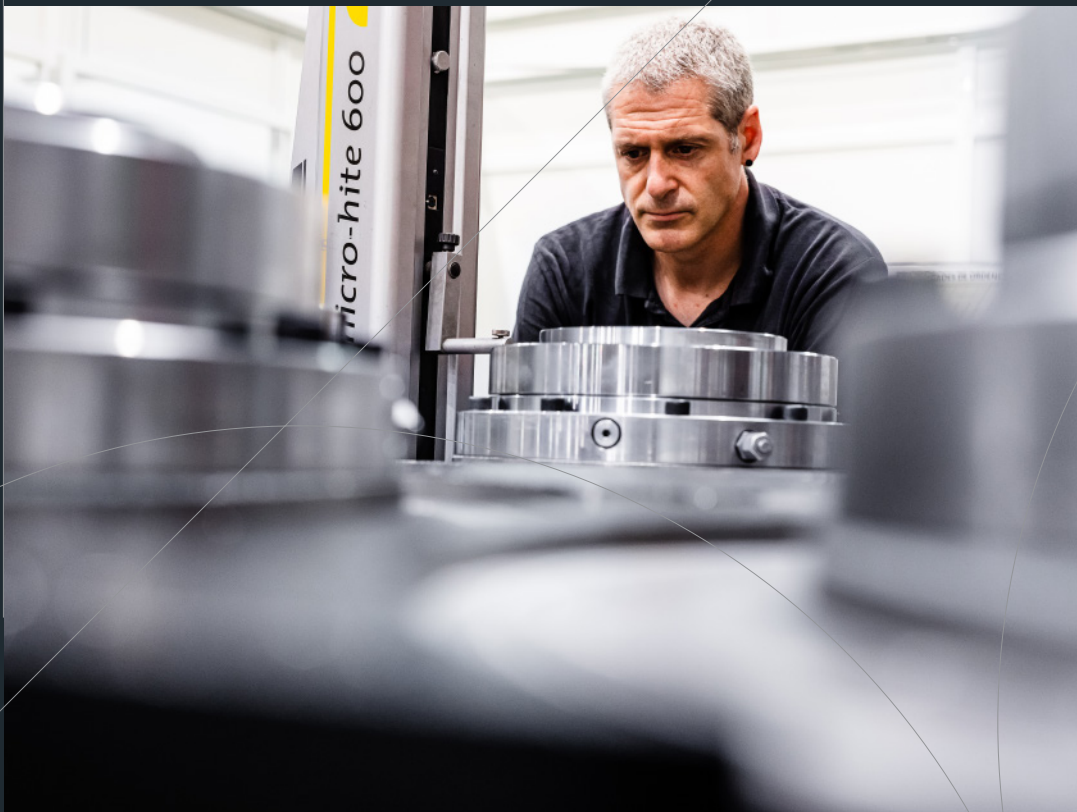
	320	450	600	800	1000	1200	1500
Operating diameter [mm]	Ø100 - Ø200	Ø120 - Ø220	Ø150 - Ø350	Ø250 - Ø450	Ø350 - Ø600	Ø550 - Ø800	Ø800 - Ø1100
Load capacity [Kg]	250	800	1500	2500	3000	3500	5000
Quill diameter [mm]	Ø55	Ø60	Ø60	Ø80	Ø100	Ø120	Ø150
Height to centre [mm]	250	325	450	500	650	800	1150

ZEATZ



ZEATZ

Fitting your projects



Special
uses

Customised rotary tables design.

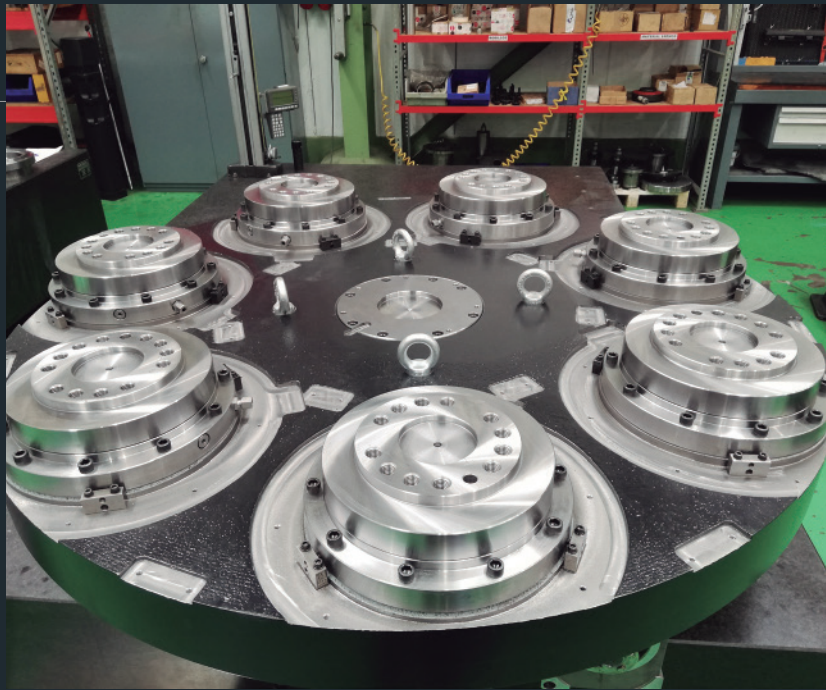
Since the design of the first rotary table 60 years ago, Zeatz designs and manufactures rotary tables for use in special projects:

-
- **Machining of spirals on rotary plates.**
 - **Machining of special pieces with large dimensions using customised accessories.**

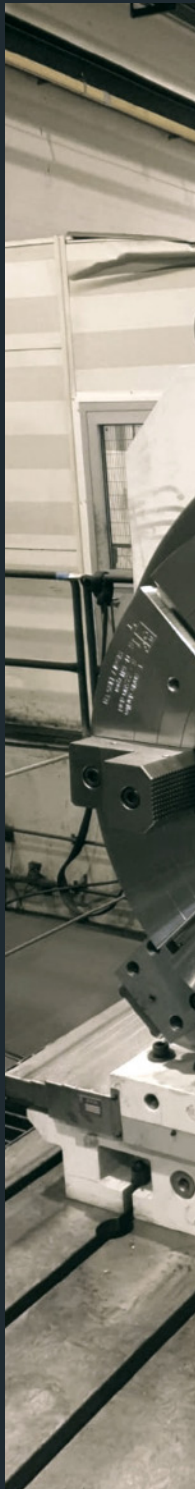
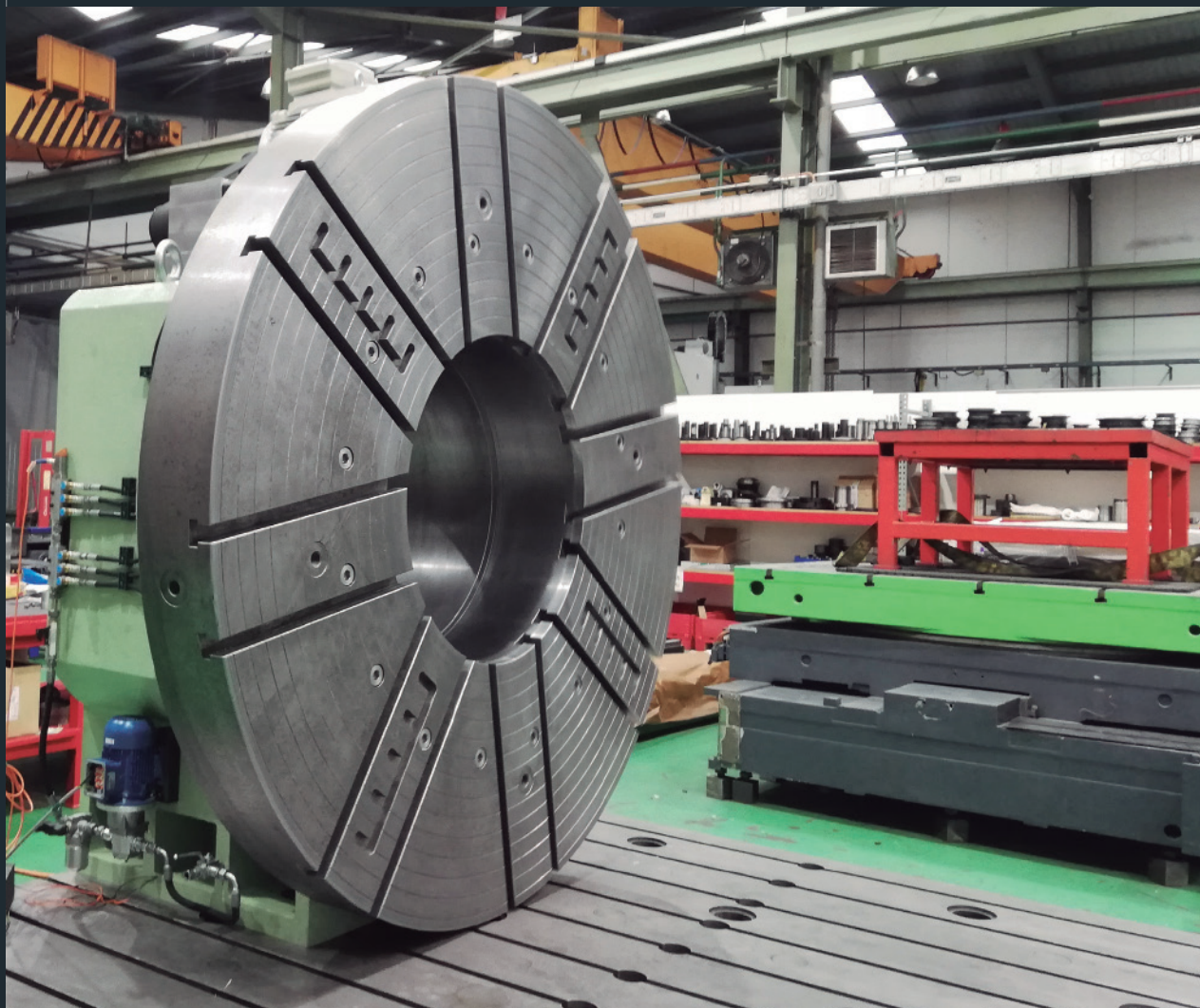
Checking tables

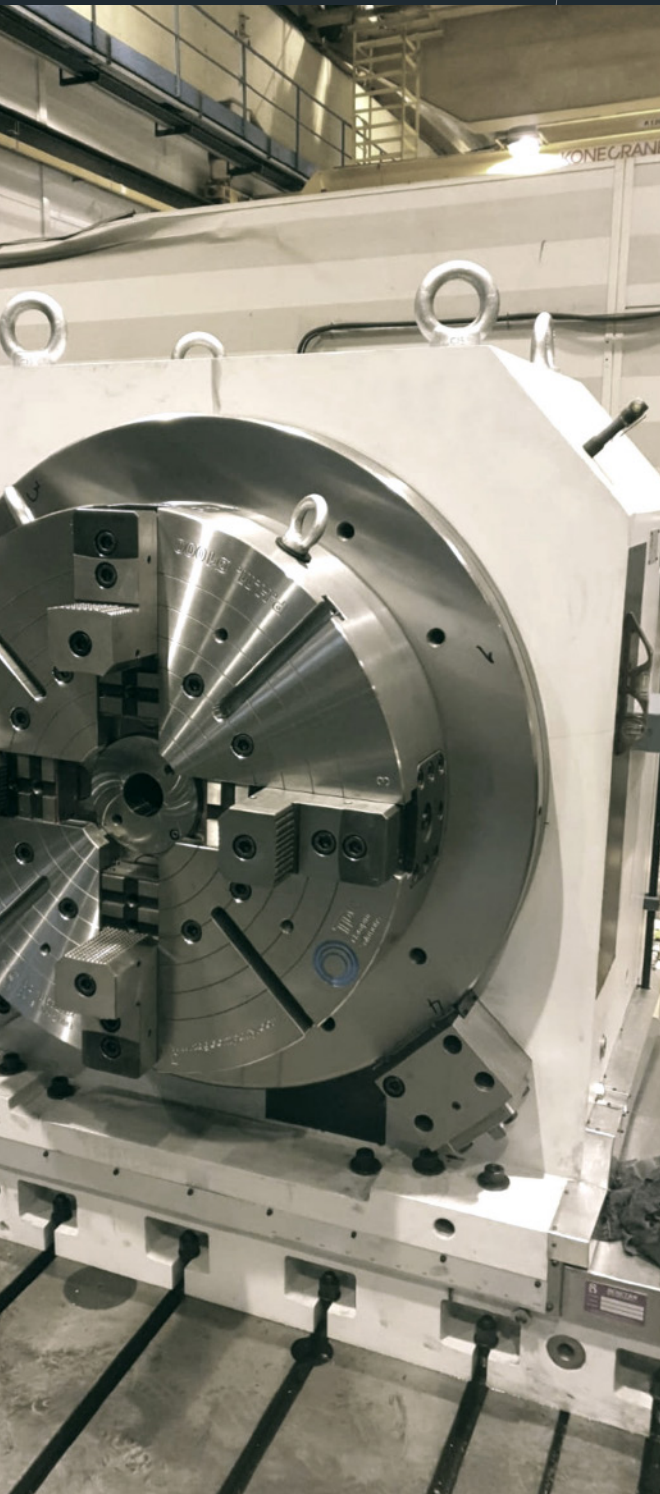
- **with integrated measuring device.**
 - **Tables with through hole Ø 1000 mm.**
 - **Palletised tables with change stations.**
-

Special multi-process
rotary table,
7 stations,
diameter 320 mm.



Grinding head Ø2500
with through hole Ø900 mm.





Special uses

PV 1500 60 TN vertical
rotary table with 500 mm
cross stroke.

COMMITTED TO SUSTAINABILITY

Our premises are in spectacular surroundings. They are set between the mountains, the forest and the Cantabrian Sea. We are aware that industrial activity must be in harmony with care for the environment. That is why we have the ISO-14001 certificate from the company Aquacert, which guarantees that our activity is carried out in a sustainable way.

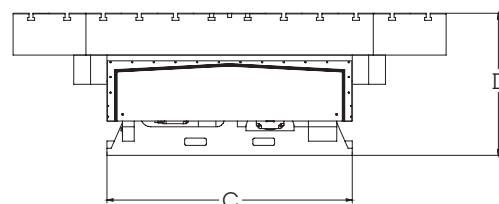
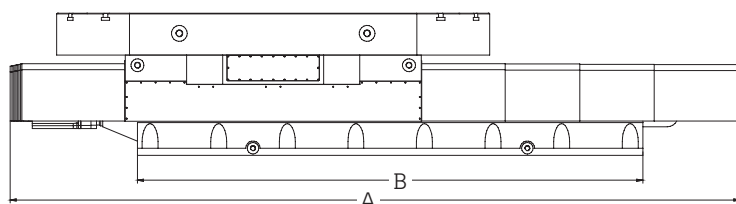




FIRST ROTARY TABLE
1962



Identification mode



IDENTIFIER FOR OFFER/ORDER OF A SPLITTER

Example of a linear splitter: PH - L - 1500 - 2 - 2000 x 2000 - w1500

PH	L	1500	2	2000x2000	w1500
Type of splitter	Linear movement	Size	1-motor/ 2-motor rotation	Table dimensions in mm	Optionally with linear movement
PH: Horizontal	L: With linear	320 450	1: 1 Motor [Available in sizes 320 - 1200]	See options in the tables of each size	From 500 mm to 400 mm
PHV: Horizontal/Vertical	-: Without linear	600 800 1000 1200			
PHT: Horizontal Turning	Available	1500	2: 2 Motors [Available in sizes between 800 - 2000]		
PHVT: Horizontal / Vertical Turning	in Type	1800 2000			
MDH: Direct Motor Horizontal	PH				
MDHV: Direct Motor Horizontal/Vertical	PHT MDH PT				
PT: 2-axis Tilting					

Pol. Ind. de Itziar Parcela C-2
20829 ITZIAR - DEBA (Gipuzkoa), SPAIN
T +34 943 199 131
E comercial@zeatz.es

www.zeatz.es